

SOLID DOSE

MODULAR FLUID BED PROCESSING EQUIPMENT LGL SERIES



CIMA[®]
Industries Inc.
Pharmaceutical Equipment



MODULAR FLUID BED PROCESSING EQUIPMENT / LGL SERIES



The LGL is a very flexible fluid bed processing machine which can be set up to accept different product bowls, depending on the product formulation and type of application. The change from one insert to another can be done without tools and is therefore very quick and easy.

- Extreme versatility to achieve great results for each kind of process.
- Easily integrated with other granulation equipment for highly automated and contained installations.



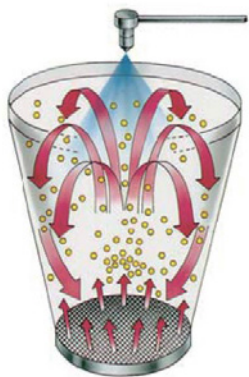
The control system permits the adjustment of machine parameters and the saving of all recipes that can then be recalled when necessary. It can be equipped with all instrumentation supporting PAT, such as NIR applications to detect moisture content or API content uniformity in the product. It can be integrated with manufacturing execution systems for process supervision.



Product containers are fitted with an air distributor with screen designed to avoid product loss into the lower part of the machine. The air distributor is not welded to the container: it can be easily removed for inspection after cleaning.



Product sampling is carried out from the product bowl.



TOP SPRAY

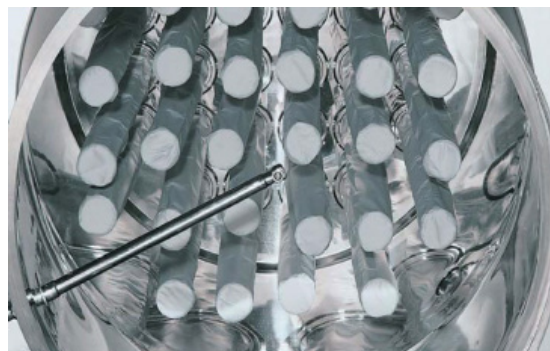
APPLICATIONS

- Drying
- Agglomeration
- Granulation
- Instantizing
- Coating

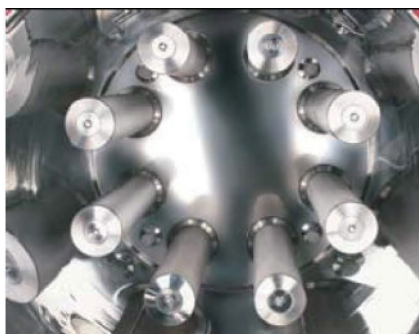
EXPECTED RESULTS

- Close mixing of components
- Particle size and density modification
- Increased compressibility
- Improvement in solubility and disintegration properties
- Controlled release of active ingredient
- Taste masking

Easy access to filter area interchangeability between fabric and metallic filters.



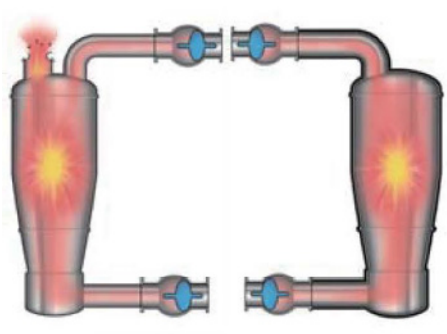
Quick action safety valves up to 12 bar atex compliant



CHAMBER ROTATION AND FILTERS

The granulation chamber can be lowered and rotated by means of a patented system: all movements are PLC controlled. Filter change and positioning are carried out from the external part of the machine without any need of lifts or platforms: the operator is always positioned at floor level. On the same machine it is possible to fit either fabric or metallic filters. The fabric filters are produced in antistatic material, while the metallic filters are fitted with a unique patented system for cleaning them in place.

The cleaning of filters during the process is done by absolute filtered compressed air and is completely automatic, avoiding interruption of the process cycle.



SAFETY

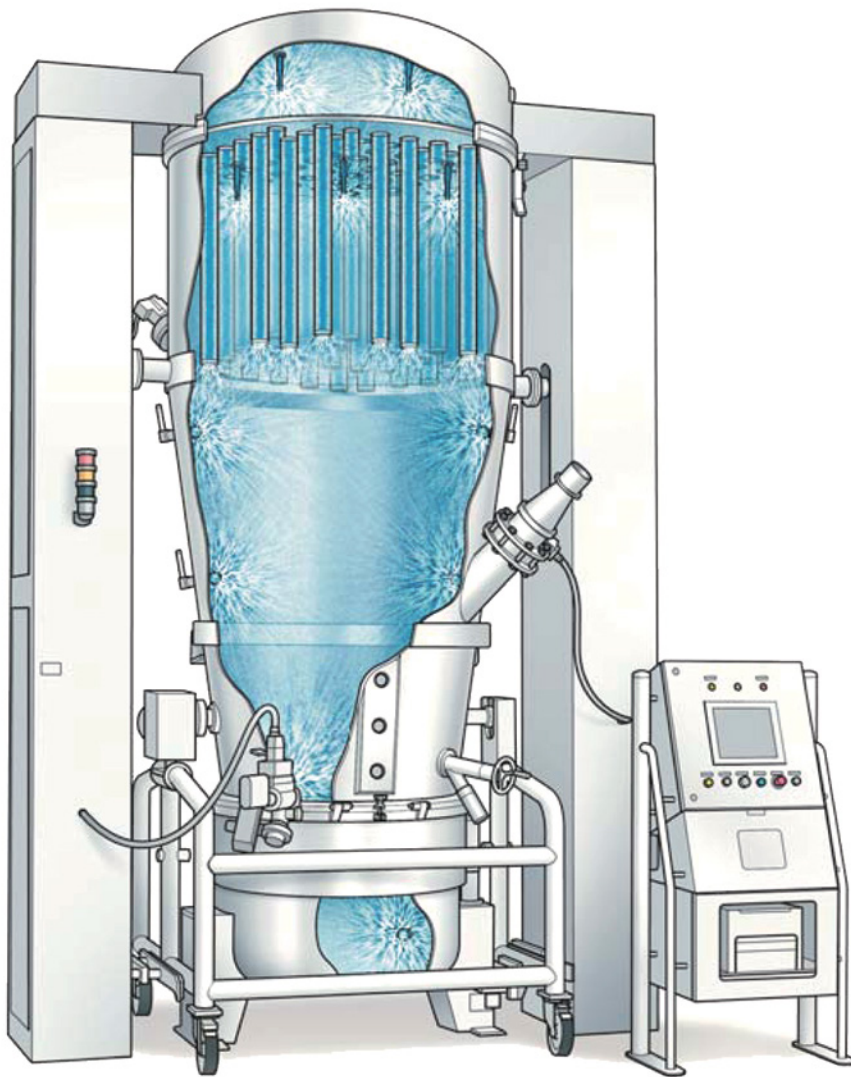
The constant air flow in the processing chamber ensures steady concentration of air suspended powders and/or solvents, significantly reducing deflagration risks. Quick Action Safety Valves are installed on inlet and outlet air ducts, to contain internal pressures that exceed the pre-set value. Earth connections are applied to different parts of the plant to avoid electrostatic charges. A continuous check on the electric absorption capacity of the earthed connection activates an automatic energy cut off in case of anomaly.

LGL standard installation is designed to withstand an overpressure up to 3 bar. Installations up to 12 bar, ATEX compliant, are also available.



SPRAYING SYSTEM

The patented spraying system operates by means of a binary nozzle avoiding dripping. Pressure, volume or weight of spraying solution can be controlled by PLC.



CLEAN IN PLACE

The machine is fitted with high flow Clean In Place system to optimize cleaning times and water consumption. All cleaning cycles can be edited and recorded and thereafter can be easily recalled and reproduced. A printout of washing parameters for batch recording is also possible.



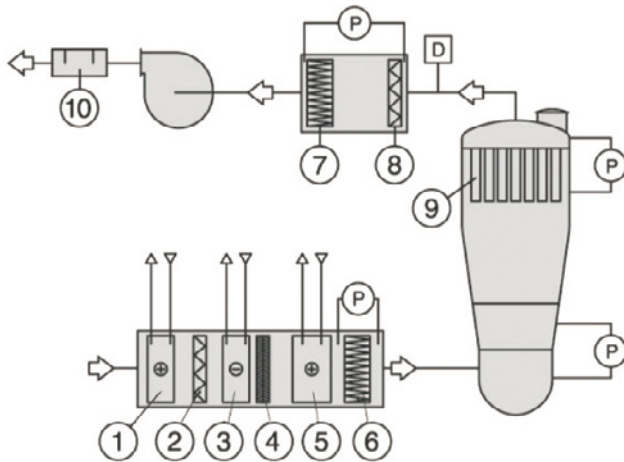


Three LGL laboratory models are available for small batch production and laboratory applications: 1, 2 Or 4 litre capacity. The equipment stands on A wheeled structure and the installation is limited To electric power and compressed air utilities. All operations are convenient due to the large Work surface.



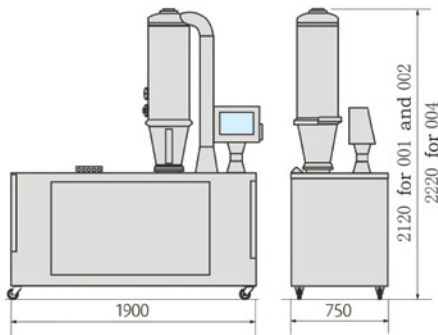
Through-the-wall installation & 12bar ATEX

PLANT DIAGRAM

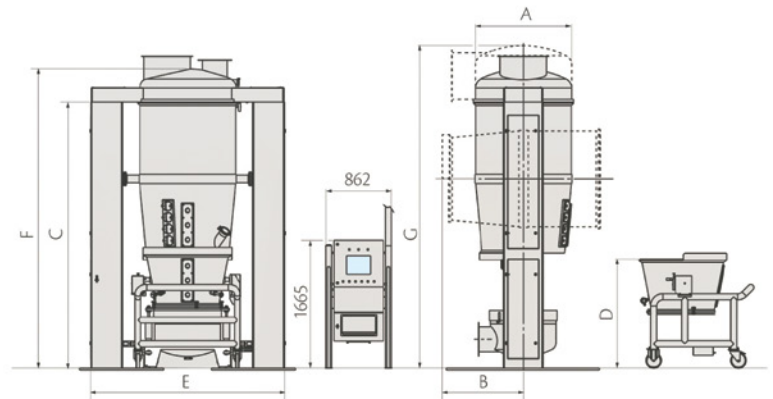


1. Pre-heating section
 2. Pre-filter
 3. Dehumidifying section
 4. Drop separator
 5. Heater
 6. Hepa filter
 7. Hepa filter
 8. Pre-filter
 9. Product filters
 10. Silencer
- P. Differential pressure gauge
D. Triboelectric probe for powder release

LGL LABORATORY



LGL



Technical data

LGL	KG	1	2	4	20	40	100	120	150	200	300	400	500
	Container volume (L)	6	15	18	66	116	320	442	480	668	770	1.173	1,400
	Product volume (L)	1 / 3	3 / 6	7 / 12	20 / 52	35 / 92	96 / 256	133 / 354	144 / 384	200 / 534	231 / 616	352 / 938	420 / 1120
Fan Unit	Air flow rate (m³/h)	450			900	1,000	1.800	3,000	4.000	6,000	8.000	10,000	13.000
	Diff. pressure (mbar)	40			90						95		
	Motor power (kW)	2			9	15	59	22		30	37	55	75
Requested utilities	Heating capacity (kW)	7			30	34	61	101	135	202	269	337	438
	Heating fluid	N.A.			5 b a r								
	Steam consumption (kg/h)	N.A.			50	60	118	190	230	354	427	575	748
	Compressed air consumption (nl/min)	220			450	850	900	1.600		2.100			2.500
	Compressed air pressure (nl/min)	6			6								
	Spray nozzle ports (n)	3			3			4					
Characteristics, dimensions and weight	A (Ø mm)	—			600	700	900	1.250		1,515		1,820	
	B (mm)				555	666	770	970	1,060	1,245	1.250	1,465	1 780
	C (mm)				2.200	2,500	2.900	3,165	3,465	4.850	4,150	4 980	5,680
	D (mm)				1.170	1,295	1.415	1,425	1,480	1,650	1.800	2.290	2,335
	E(mm}				1 460		1.585	2,530		2,785		3,270	
	F vertical rupture disc (mm)				2,535	2,840	3,300	3,600	3,900	4,370	4,680	5,780	6,480
	G horizontal rupture disc (mm)				2,660	2,960	3.420	3,765	4.065	4,540	4.890	5,890	6.600
	Weights (kg)	545	540	550	1,500	1,600	2.500	2,900	3.000	3.4C0	3,600	4,000	5,000

Environment requirements. Temperature 5-40 °C . Relative humidity:70%(maximum). Altitude; 2000m(maximum)



CIMA[®]
Industries Inc.
Pharmaceutical Equipment



PANAMÁ

World Trade Center. 1er Piso, Área Comercial.
Calle 53 Marbella. Apartado 0832-00155 WTC
Panamá, República de Panamá.
Tel. +507-205-1915
Fax. +507-205-1802

ARGENTINA

Fragata Trinidad 1539
Ciudad Autónoma de Buenos Aires
CP 1440. República Argentina.
Tel. + 54 11 4686 3868

SHANGHAI

Office 301, Building 12, Lane 2328 Chun Sheng
Minhang District C.P. 201100
Shanghai, People's Republic of China.
Tel. +86-21-54993845
Fax. +86-21-54992467

CIUDAD DE MÉXICO, MÉXICO.

Pafnuncio Padilla 26 Piso 3, Despacho 329
Ciudad Satélite, Naucalpan de Juárez,
Estado de México. C.P. 53100
Tel. +52-55-2455-5901

GUADALAJARA, MÉXICO

Av. Doctor Roberto Michel 1156
Col. San Carlos. Guadalajara,
Jalisco, México. C.P. 44460
Tel. +52-33-4777-6000

GUATEMALA

2da Calle D-8-11 zona 16
Col. Lourdes Cp. 01016 Ciudad de Guatemala,
Guatemala Centro.
Tel. +502-5966-0585

COLOMBIA

Calle 100 # 8ª-55 Torre C
Oficina 1005. Bogotá, Colombia.
Tel : +57-1-6567381

BRASIL

Gessy Lever, 869
Lenheiro, Valinhos 13.272-000
São Paulo, Brasil.
Tel: +55-19-3295-8362

PERÚ

Madrid #245,
Departamento #501, Miraflores,
Lima-Perú.
Tel. + 51 952197438

VENEZUELA

Av. Principal de Macaracuay
Multicentro Macaracuay
Piso 9, Ofic. 906 Municipio Sucre
Caracas, Venezuela. CP 1070
Tel: +58 212-2560401

ECUADOR

Calle los Senderos No. C 9
Las Cascadas
Pichincha, Quito Ecuador.

CHILE

Alcántara 200 piso 6
Las Condes
Santiago de Chile, Chile.

COSTA RICA

Itskatzú, Suite 203, 2do Piso.
Escazú, San José, Costa Rica.

USA

256 Airport Road
Fall River,
MA 02720, USA.

EGIPTO

11 Emad El Din Calle
Egipto.



SHANDONG SMA PHARMATECH CO., LTD

165 Huabei Road, High & New technology Development Zone, Zibo City, Shandong Providence, China.
Postcode: 255086 Tel. (+86) 533 3813925/3813011 Fax. (+86) 533 3813012/3813002
www.sd-sma.com