

SHINVA



CIMA[®]
Industries Inc.
Pharmaceutical Equipment

AUTOMATIC WASHER-DISINFECTOR



*Integral solutions in Processing
and Packaging equipment*

AUTOMATIC WASHER-DISINFECTOR

EASY-A-480 washer-disinfector provides most of the reusable medical instruments with standardized and automatic washing and disinfection to effectively avoid cross infection and protect the staff and patients. Strict control of the cleaning and disinfection quality provides a reliable guarantee for the reusable items in hospital.

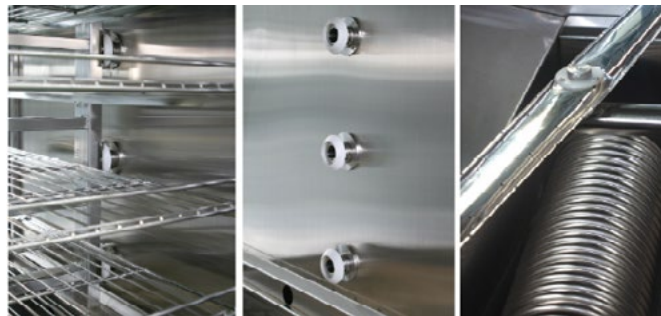
The auto-controlled program includes the following stages:

- Cleaning(adding enzyme or other detergent)
- Rinse (may include several stages)
- Disinfection(adding lubricant, 93 °C Disinfection)
- Drying

Standardized program improves cleaning and disinfection effect as well as reducing possibility of infection during process.



For single equipment,barcode scanner can be equipped as an option. And internet port is equipped to conveniently connect to traceability system,by which quality control with good traceability can be achieved on instrument package and single instrument.



SAFE AND RELIABLE CONTROL, EASY TO OPERATE

- The control system takes self-check and fault diagnosis functions to ensure the equipment reliable and safe running.
- The door can stop automatically and alarm if meeting any obstacles during its upward to ensure safety of the operator and machine.
- Large glass windows, touch screen man-machine interface, easy to observe and operate.
- Parameters can be printed in real-time for data archiving.
- Monitoring of each machine can be achieved by the communication port and computer, convenient for production management.
- EASY-A-480 is designed and manufactured according to ISO 15883-1
- High performance, low consumption.
- Single/Double door (the double-door channel structure makes the machine as a isolation barrier between contaminated area and clean area)
- Door-open type: Downward.
- Automation of running program.
- Validated clean procedure.
- Easy to maintain.
- Safety for staff and patients.

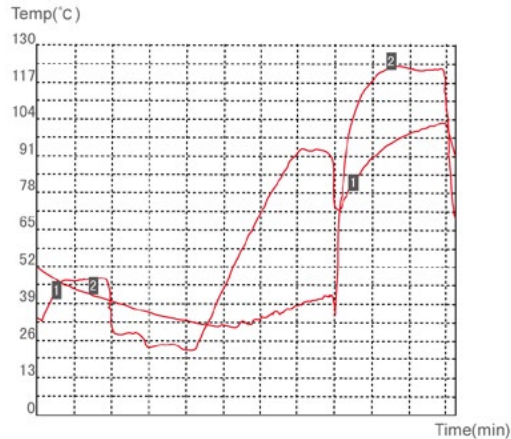
APPLICATION

- General surgical instruments.
- Reusable stainless steel instruments/glasswares and trays indicating to be cleaned and disinfected.
- Stainless steel bowls and kidney trays.
- Anaesthesia/ respiration tubes and its accessories.
- Other devices, appliances and vessels meeting the requirements.

According to ISO15883-1, the validity of the heat disinfection is defined as the integral relationship between time and temperature. The validity is set as A_0 , corresponding time in seconds at 80°C.

Different A_0 and the conditions they need:

$A_0 = 3000$	$A_0 = 600$	$A_0 = 60$
80°C/3000sec	80°C/600sec	80°C/60sec
85°C/950sec	85°C/190sec	85°C/19sec
90°C/300sec	90°C/60sec	90°C/6sec
93°C/150sec	93°C/30sec	93°C/3sec



Program: surgical instruments
 Program no.: 0000000000
 Operator: lowpower
 Batch no:
 Working date: 2009-02-14
 Start time: 09:03:01
 Chamber temp: line 1
 Air temp: line 2
 End: normal exit
 End time: 10:00:01
 A_0 Value: 05293
 Operation cycle: 057 mins.
 Chart speed: 005 min/cell
 Error code: 000-

LOADING AND UNLOADING



Manual or automatic loading and unloading system

EASY-A-480 manual loading/unloading system takes an auto bar both to prevent the wash racks sliding down and to joint with the chamber.

EASY-A-480 automatic loading/unloading system can automatically transfer wash racks into the washing chamber and pull them out from the other side after the procedure finished.

OPTIONAL WASH RACKS



Four/Five -layer wash racks
 They are mainly used in surgical instruments putting in DIN trays.
 Remarks: Wash racks are not recommended to load bowls and kidney trays.



Glassware wash racks
 It is used to clean glasswares.
 Remarks: Due to a wide range of glasswares.
 Customable size.



Racks for bowls and kidney trays
 It is used to clean bowls and kidney trays



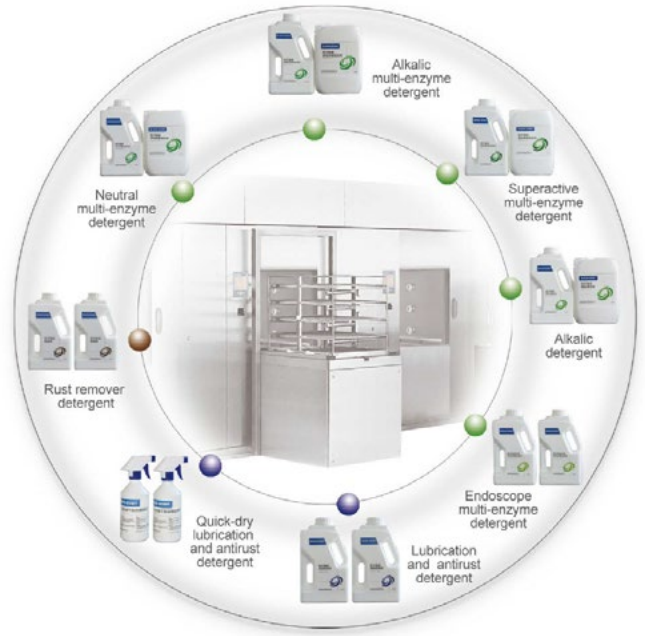
Anaesthesia/ Respiration tubes racks
 It is used to clean anaesthesia/ respiration tubes or veil

Wash racks for other items can be customized according to users demands.

THE CLEANING & INSTRUMENT-LUBRICATION PRODUCTS

CLEANING DETERGENT SERIES

- Neutral multi-enzyme detergent:
This neutral and low foaming detergent is applicable for many kinds of instruments to remove all organic contaminant.
- Alkalic multi-enzyme detergent:
This low-alkaline has special cleaning efficiency on oil and fat. It also used for removing organic contaminant of stainless steel and glass ware.
- Superactive multi-enzyme detergent:
Ultra concentrated, super detergency, neutral and low foaming. It is applicable for many kinds of instruments to remove all organic contaminant
- Alkalic detergent:
This high cost performance detergent has special cleaning efficiency on oil and fat. It is applicable for stainless steel instruments.
- Endoscope multi-enzyme detergent:
This neutral and low foaming detergent contains more bio-enzyme and active matter that has better cleaning effect. No corrosivity on endoscope.



LUBRICATION AND ANTIRUST DETERGENT SERIES

- Lubrication and antirust detergent:
Water-soluble mineral oil, better antirust effect.
- Quick-dry lubrication and antirust detergent:
This self quick-dry detergent can form protective film on the surface of instruments to guarantee the joint flexibility.
- Rust remover detergent series:
This detergent can effectively remove the rust and incrustant to protect the instrument and extend service life.

TECHNICAL PARAMETERS

Chamber size(W x H x D): 696x1111 Ox700mm
Overview size(W x H x D): 1110x1870x910mm
Size of wash racks(W x H x D): 652x630x664mm
Capacity: 10 DIN trays(big one)
Standard program time: s; 6Qmin



World Trade Center. 1er Piso, Área Comercial
Calle 53 Marbella. Apartado 0832-00155 WTC
Panamá, República de Panamá
Tel. +507 205 1915 Fax. +507 205 1802

Address: No. 2009 Xinglu Ave. Shinva Science Park, Zhoucun, Zibo,
Shandong Province, P. R. China
Postcode:255300
Sales telephone: 0086-533-3581273
Email: xhmed@vip.163.com
Website: www.shinva.com